

Summits On The Air Colorado Style

Bob Witte, KØNR
bob@k0nr.com
Monument, CO



Agenda

1. Colorado 14er Event
2. Summits On The Air (SOTA)
3. Summary, Q&A



The Colorado 14er Event is:

- Held the First Full Weekend in August (August 6-7, 2016)
- This year the event is all weekend (Saturday and Sunday, Mountain Time)
- Primarily focused on the 54 official 14,000 foot summits in Colorado
- Includes the 1748 SOTA peaks in Colorado
- Includes VHF, HF, all modes
- Activate mountains and chase mountains

25th Year

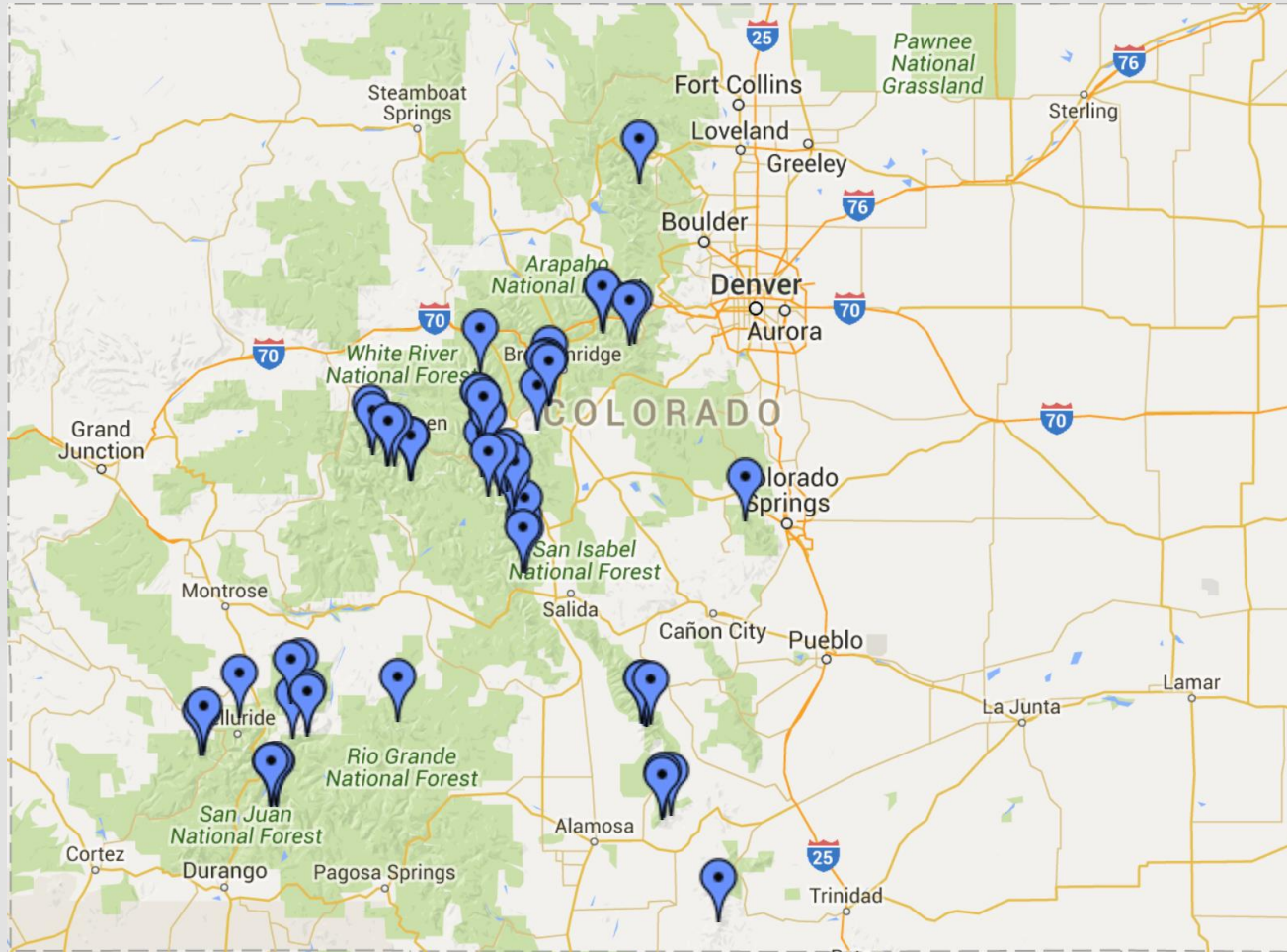


The Colorado 14ers

- Colorado Mountain Club list of 54 Peaks with elevations 14,000 feet or higher
- Drive-Up 14ers:
 - Pikes Peak, Mount Evans
- All of the rest require foot power
 - Varying degree of difficulty, none "easy"
 - Safety First, Be Prepared



The 54 Colorado 14ers



Operating Tips

Most common frequencies:

147.42, 147.45, 147.48 MHz FM

446.00, 446.025 MHz FM

14.060 MHz CW

14.345 MHz SSB

Use any legal amateur band/mode

Mountaineering Safety:

Be Prepared

Know Your Route

Know Your Capability

Be Concerned About:

Weather

Lightning

Gravity



Steve WGØAT at 14,000 Feet





Joyce KØJJW Humbolt Peak



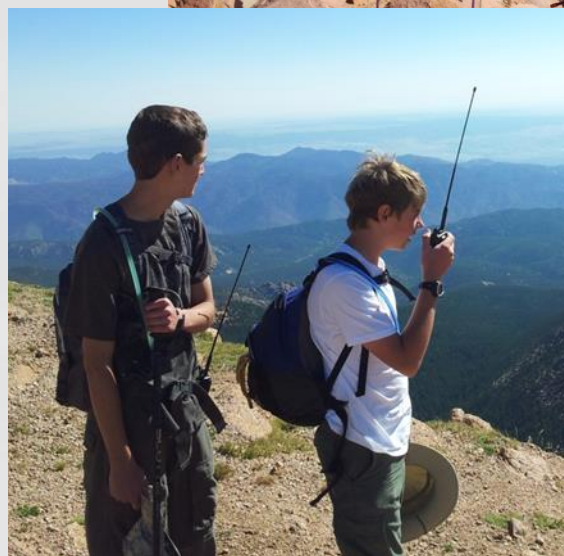
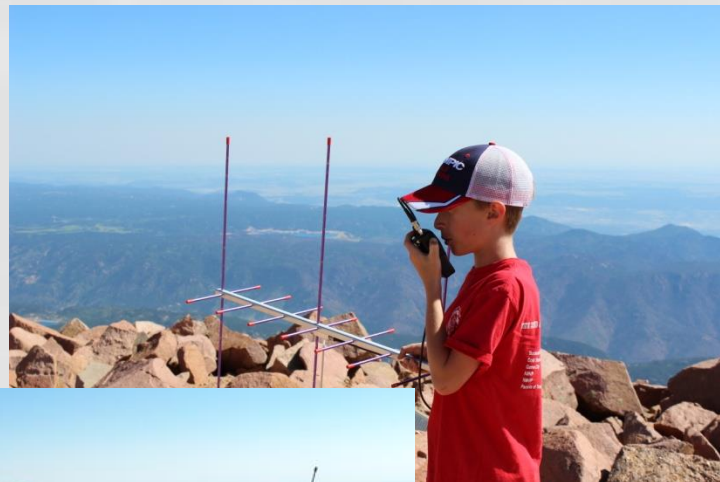
David KI6YMZ and Ben KDØPNS on Mt Shavano



Hon Chu KQ6EE on Mt Belford



Boy Scouts On Pikes Peak



Peter K3OG on Grays Peak



Note: Yagi for 2m and 70 cm

Maxon for 6m



David KI6YMZ on Mt Elbert 2015



Steve WGØAT and Guy N7UN



It's Not Always
Warm and Sunny





SOTA !!!



Summits On The Air (SOTA)

- Two ways to participate
 - Activator
 - Chaser
- Points and Award System
- Over 1700 SOTA summits in Colorado
- A wide variety of difficulty and elevation
 - From 5398 feet to 14,443 feet
- SOTA activation requirements:
 - summit must be on the SOTA list
 - equipment must be carried (no minimum distance)
 - portable power (no fossil fuel generators)



SOTA Scoring

Based on ASL elevation of a qualified peak

May include a “seasonal bonus” for activators

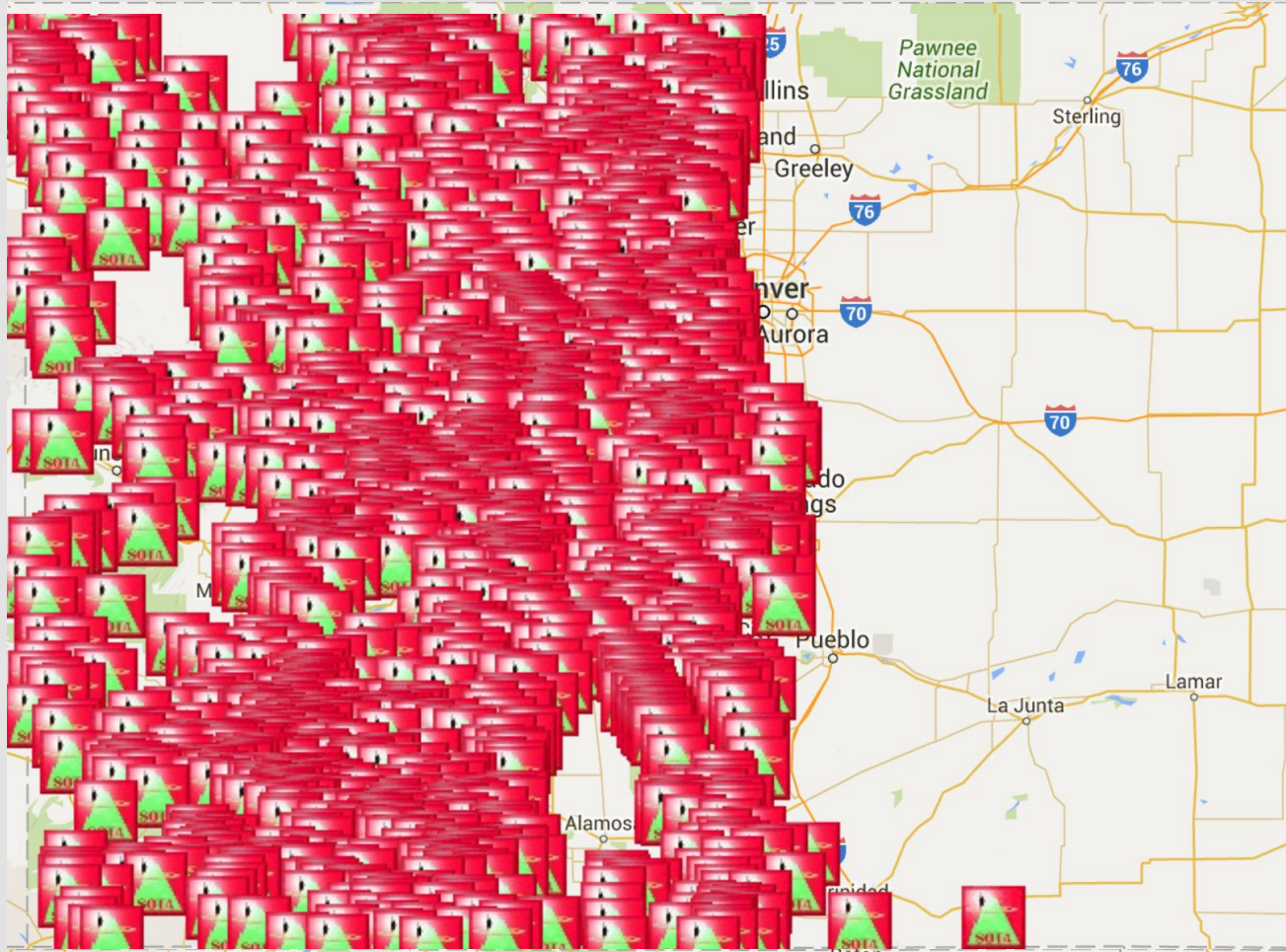
Scoring for WØC – Colorado:

Under 8000'	1 point	(225 peaks)
8000' to <9000'	2 points	(245 peaks)
9000' to <10500'	4 points	(360 peaks)
10500' to <12500'	6 points	(440 peaks)
12500' to <13500'	8 points	(345 peaks)
13500' +	10 points	(181 peaks)

May vary by association based on terrain

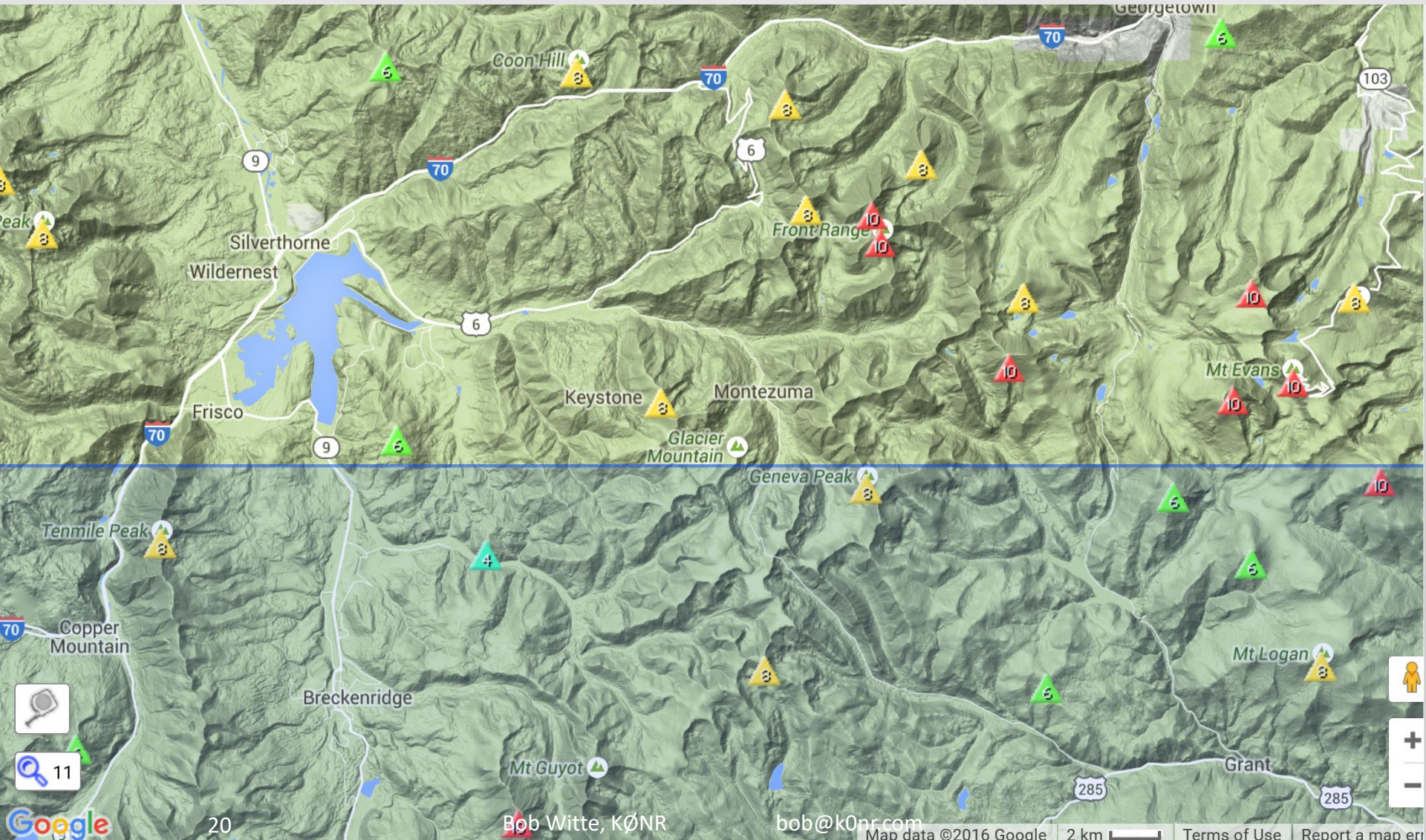


SOTA Summits in Colorado



SOTA Peaks Near Keystone

Triangles indicate SOTA peak and number of SOTA points





This page refreshes every 1 minute. Last updated **03:33:38** UTC.

Latest Spots

>> [more spots](#) | [new spot](#)

- Sun 21:25 **K4HYJ** on [W4G/NG-035](#) **14.000** other
QRT - leaving summit. (Posted by KD9KC)
- Sun 21:19 **K4HYJ** on [W4G/NG-035](#) **14.305** ssb
Nice sig 57 near Montreal 73\'s de ve2jfm (Posted by VA2VL)
- Sun 21:14 **K4HYJ** on [W4G/NG-035](#) **14.304.7** ssb
56 in Oklahoma (Posted by KA5WRG)
- Sun 21:13 **K4HYJ** on [W4G/NG-035](#) **14.3047** ssb
33 in OR (Posted by NS7P)
- Sun 21:11 **K4HYJ** on [W4G/NG-035](#) **14.304** ssb
NO COPY IN KANSAS (Posted by AA0LV)

Upcoming Activations

>> [more alerts](#) | [new alert](#)

- Mon 13:00 **DF2GN/P** on [DM/BW-376](#) **28-cw,21-cw,18-cw,14-cw,10-cw,7-cw**
first cw act. of this summit...also SSB on 14.280 / 7.118 (Posted by DF2GN)
- Mon 16:30 **WO6M** on [W6/CT-009](#) **10.110-14.061-21.062-cw**
ETA approx (Posted by WO6M)
- Mon 17:00 **NM5S** on [W5N/PW-038](#) **7.031-cw,14.061-cw**
start on 40m (Posted by NM5S)
- Mon 19:30 **NM5S** on [W5N/PW-037](#) **7.031-cw,14.061-cw**
Possible access issues. If OK will start on 40m. (Posted by NM5S)
- Mon 20:00 **WO6M** on [W6/CT-054](#) **10.110-14.061-21.062-cw**
ETA approx (Posted by WO6M)

Reflector Latest

[SOTA NEWS MARCH 2013](#)

by G4SSH, #10 by G4SSH, 15days ago

[Dealing With Disruptive Opera](#)

by G8ADD, #43 by VA2SG, 70days ago

[The Shropshire 2-pointers...](#)

by M1EYP, 2hrs ago

[Frenni Fawr today](#)

by GW4VPX, #20 by M1EYP, 3hrs ago

[Not in log for HB/AR-008?](#)

by HB9DST, 5hrs ago

[BW-159 delta loop](#)

by DF2GN, 5hrs ago

[G4YSS:G/NP-006; NP-015; NP-C](#)

by G4YSS, #4 by M0CGH, 6hrs ago

[VIDEO SOTA EC2AG/P EA2/BIO](#)

by EC2AG, #4 by M6RGF, 6hrs ago

[Lake Peak, NM Pictures](#)

by KE5AKL, #3 by G6ODU, 9hrs ago

[SOTA Summit Paddles](#)

by WG0AT, #11 by G8TMV, 12hrs ago

[Q . When is a spot not a spot?](#)

by G4ISJ, #44 by G4ISJ, 18hrs ago

[Mt Sterling Activation report a](#)

by KK4NQQ, #4 by N2XJS, 25hrs ago



W0C/FR-004, Pikes Peak - 4292m, 10 Points

Quick links: [Back to W0C Association](#) | [Back to FR Region](#)

Association: USA - Colorado **Region:** CO-Front Range


Latitude: 38.8406 , **Longitude:** -105.0444

QTH Locator: DM78lu

Today's Sunrise: 12:02 UTC , **Today's Sunset:** 01:52 UTC

[Google Map](#) | [Google Earth](#) | [OpenStreetMap](#) | [SOTA Map](#)

Resources

Feel free to add External Links  and Articles relating to this summit that activators and chasers may find useful or interesting. Please read the disclaimer notice at the bottom of the page.

Handicap access. Submitted by KD5KC on (13 Apr 2014)

Summit access. Submitted by KD5KC on (13 Apr 2014)

K0NR: How To Do a SOTA Activation on Pikes Peak  Submitted by K0NR on (22 Sep 2013)  

Activation Photos 30Sep2011: Chuck N6UHB & Naomi KD0PNK  Submitted by N6UHB on (27 Jan 2012)

Pikes Peak - W0/FR-004 Submitted by KD9KC on (29 Nov 2011)

[+Add new external link](#) | [+Add new article](#)

DISCLAIMER: The SOTA programme and its Management Team is not responsible for the content of external internet sites or for information added by third parties to this website. Please contact the SOTA Management Team if you have concerns about submitted content. The existence of information relating to a particular location does not confer or imply any right of access. Participation in the SOTA Programme is at the risk of the participant.

Summit Activity

Total Activations: 54 [View All](#)

Latest By:

N0TA on 04 Mar 2016

KG7KSA on 10 Oct 2015

N0KTK on 24 Sep 2015

NM5S on 19 Aug 2015

N0XDW on 02 Aug 2015

First Activated by:

NS0TA on 08 Aug 2011

Activated by You on:

02 Jul 2013

896 QSOs on these bands:

40m	21	2%
30m	37	4%
20m	560	63%
17m	22	2%
15m	42	5%
12m	6	1%
10m	20	2%
6m	1	<1%
2m	173	19%
70cm	14	2%

Easy VHF SOTA Activation

Also known as “take along a 2M handheld on a hike”



Kaufman Ridge HP
(WØ/SP-081)

10,765 feet elevation



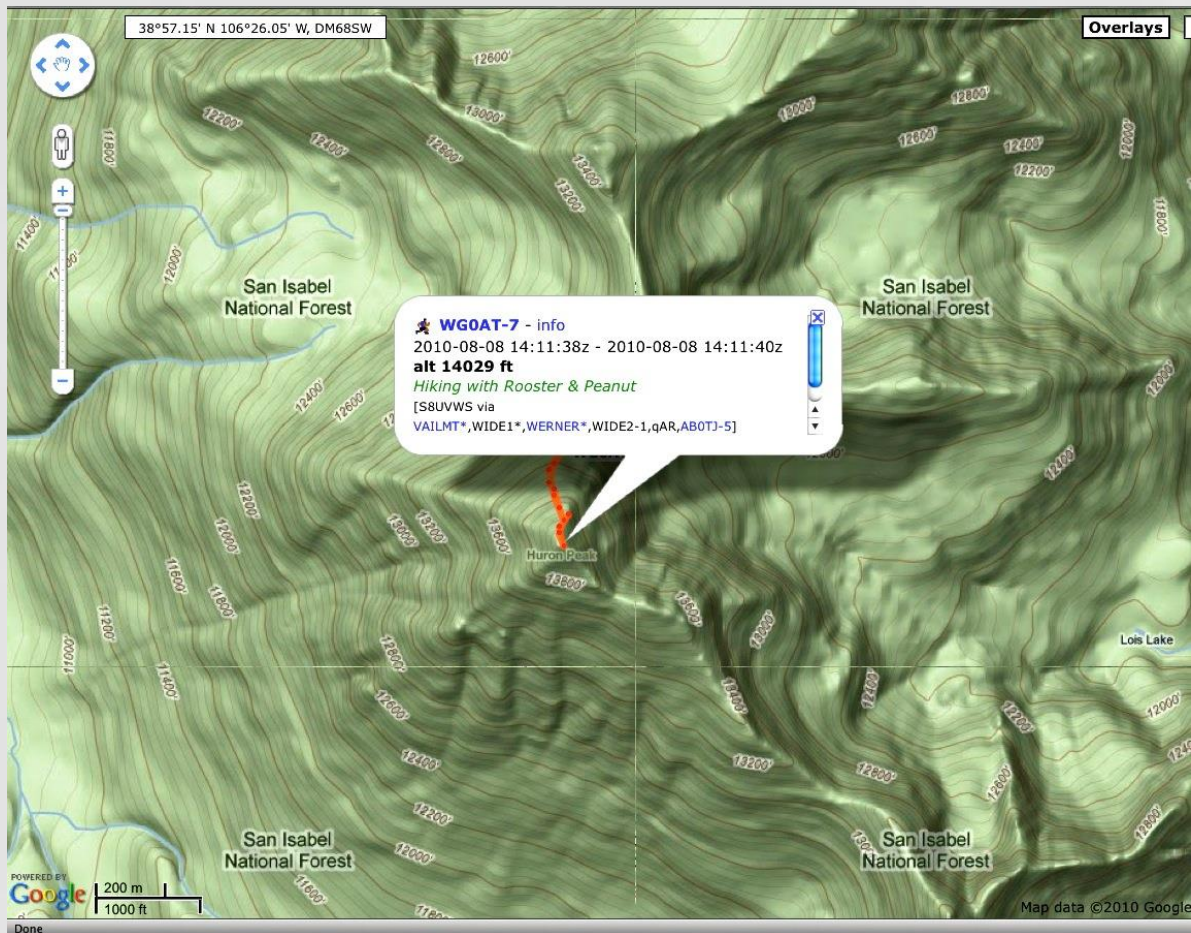
The 1/2-wave Vertical Antenna



MFJ-1714 – SMA or BNC connector



APRS For Position Reporting



Yaesu VX-8GR
APRS handheld
w/GPS



Improved VHF SOTA Activation

Also known as “bring along a small 2-Meter Yagi antenna”



Aspen Ridge
(WØC/SP-084)

10,740 feet
elevation

Arrow 3-element
Yagi for 2m



Steve WGØAT on Handies Peak



Handies Peak
((WØ/SJ-001)

14,048 feet elevation



Mt Herman
WØC/FR-063
9063 feet



VHF Contest plus SOTA
2016 January VHF Contest (KØNR)
2m & 70cm fm and ssb
Use of 146.52 MHz now allowed in
contest
17 QSOs in about one hour
Best DX: Wyoming DN71 (140 miles)

HF or VHF?

Take Your Pick, Or Do Both

VHF/UHF

Height Above Average Terrain

Basic/compact equipment: Handheld Transceiver (HT)

Dependent on local chasers

FM most common, SSB for VHF contests

Technician Licensees can play

HF

Classic QRP operating (CW and SSB)

Longer distance contacts

More radio contacts

Recommended: General License Class or higher



HF Transceivers

ATS-3A CW Transceiver



Elecraft KX3



Yaesu FT-817



Elecraft KX1

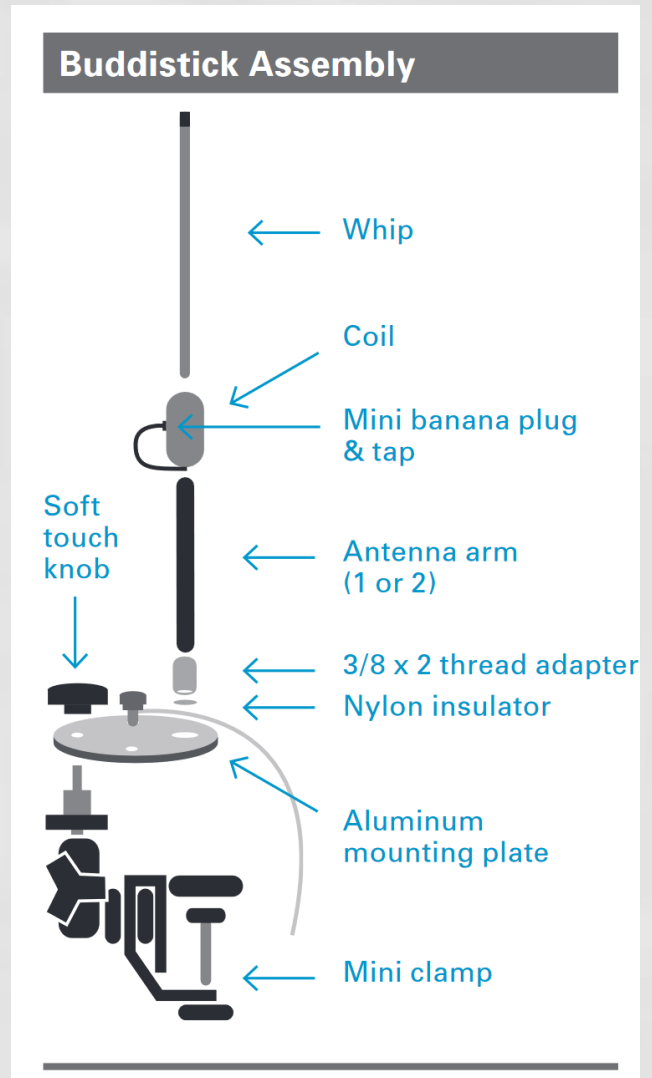


Buddistick Antenna

Covers 40m through 10m
Tunes via tapped coil
Uses one radial as counterpoise



Deluxe package, \$175



EFHW Antenna

End-Fed Half-Wave Antenna

Kind of like a half-wave dipole but you can feed it from the end.



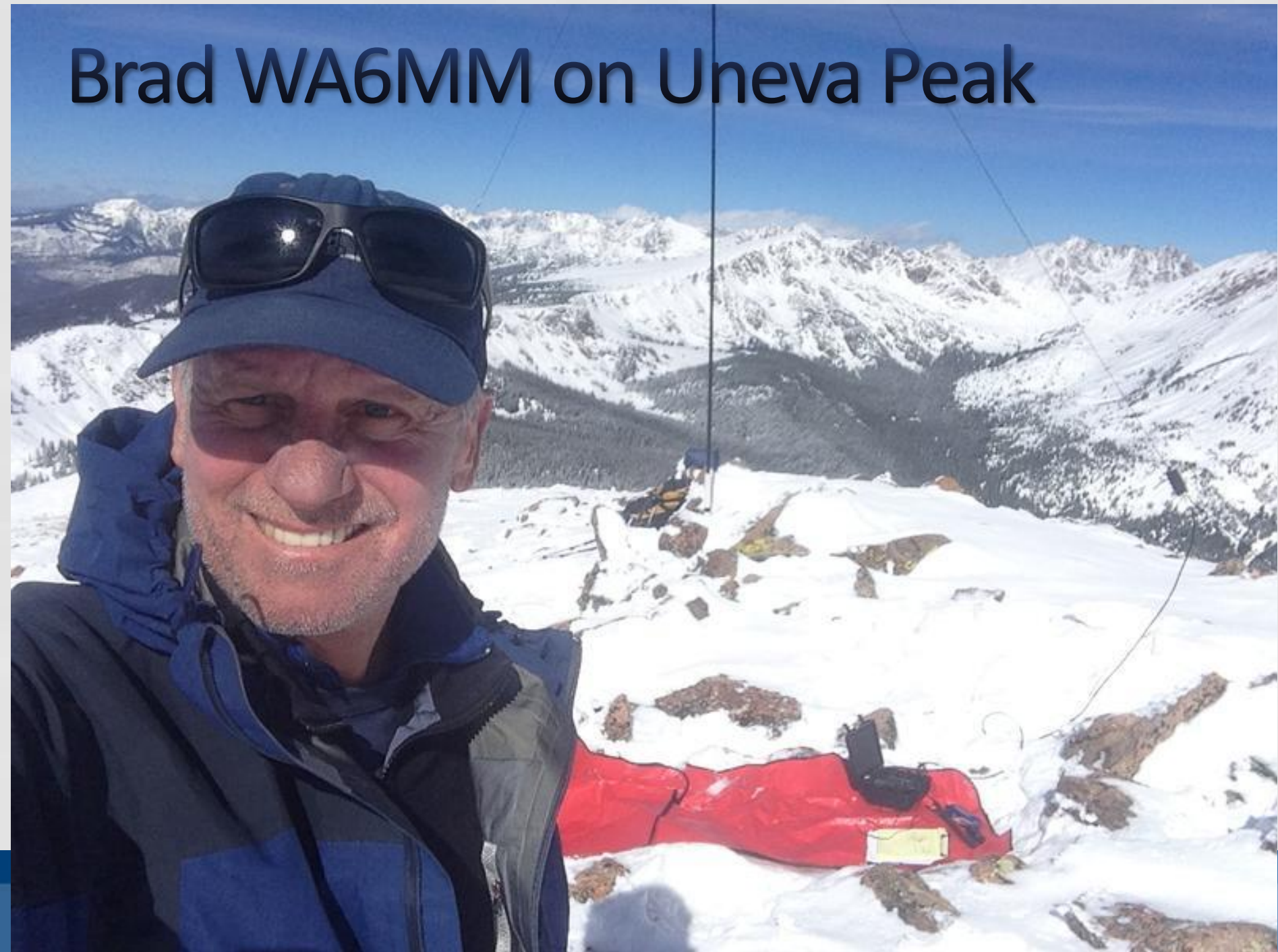
No Trees: Wire Antenna on Fishing Pole



George KXØR



Brad WA6MM on Uneva Peak



Steve WGØAT



<https://youtu.be/yUkM1uvWpxg>



WØC Activator Role of Honor

Position	Activator Callsign	Summits	Points	Seasonal Bonus	Total Score	Avg. points per Expedition	View Log
1	KXOR	359	1550	216	1766	4.92	View
2	KOMOS	207	1108	177	1285	6.21	View
3	W0CCA	137	1089	63	1152	8.41	View
4	K0JQZ	202	925	147	1072	5.31	View
5	KCOYQF	118	631	90	721	6.11	View
6	W0CP	90	526	63	589	6.54	View
7	WG0AT	116	463	96	559	4.82	View
8	WA6MM	59	492	45	537	9.10	View
9	N5XL	62	393	36	429	6.92	View
10	N0TA	84	342	60	402	4.79	View
11	N0BCB	74	324	33	357	4.82	View
12	N6UHB	48	268	57	325	6.77	View
13	ADOKE	45	239	51	290	6.44	View
14	KD0PNK	43	219	60	279	6.49	View
15	W0MNA	40	214	0	214	5.35	View
16	K0NR	38	198	12	210	5.53	View
17	W0ERI	37	208	0	208	5.62	View
18	KD0YOB	29	127	12	139	4.79	View
19	KH7AL	28	98	9	107	3.82	View
20	K0FTC	22	87	3	90	4.09	View
21	KD2FPP	10	80	0	80	8.00	View
22	KI0G	20	61	12	73	3.65	View
23	KI6YMZ	5	50	6	56	11.20	View
24	W0ECE	8	49	0	49	6.13	View
25	KA0BV	5	44	0	44	8.80	View
26	AG5CQ	10	42	0	42	4.20	View
27	K0ZV	6	37	0	37	6.17	View
28	NK0E	7	36	0	36	5.14	View
29	N0XDW	5	35	0	35	7.00	View
30	N0YE	10	28	3	31	3.10	View
=30	KD0BIK	8	31	0	31	3.88	View
32	KF6LHX	5	28	0	28	5.60	View



George Fuller KXØR

Mountain Goat

359 Activations
(158 unique)
For 1550 activator points

“The program is very broad and inclusive. I think it’s great that operators can participate as both chasers and activators, and that SOTA activations are encouraged in so many associations.” – George KXØR



James Peak WØC/SR-031



WØC Chaser Role of Honor

Position	Chaser Callsign	Activators Worked	Points	Avg. points per Expedition	View Log
1	WOMNA	10726	55289	5.15	View
2	WOERI	8790	46301	5.27	View
3	KX0R	1335	6002	4.50	View
4	KI0G	1084	5932	5.47	View
5	N5XL	908	4690	5.17	View
6	WG0AT	583	3226	5.53	View
7	K0JQZ	588	3093	5.26	View
8	AC0A	447	2766	6.19	View
9	WB9WHQ	341	1817	5.33	View
10	W0CP	270	1418	5.25	View
11	N0TU	268	1401	5.23	View
12	NOTA	223	1203	5.39	View
13	K0NO	219	1198	5.47	View
14	KI0SK	205	1160	5.66	View
15	K0NR	167	937	5.61	View
16	AA0LV	132	817	6.19	View
17	W0EA	142	745	5.25	View
18	WA6MM	145	698	4.81	View
19	K0MOS	155	627	4.05	View
20	NU0T	70	441	6.30	View
21	KC0YQF	65	378	5.82	View
22	KD0YOB	64	303	4.73	View
23	N0BCB	63	299	4.75	View
24	N0XDW	57	276	4.84	View
25	WB9QDL	64	258	4.03	View
26	AD0KE	52	240	4.62	View
27	WA0KAQ	37	228	6.16	View
28	WB0PTD	34	214	6.29	View



Gary Auchard WØMNA

Super Chaser!

Worked 10726 activators
for 55289 points

Achieved Shack Sloth
(1000 pts) in 68 days.

“I guess the fun part for me has been working the weak signals...knowing there is a person on the other end that has gone to a lot of trouble to be there, and I want to be sure his trip is made worth his efforts and people appreciate them doing the activator part.” – Gary WØMNA



Super Easy SOTA Summits

Super Easy: easy access, less than 1 mile hike, less than 500 feet vertical

- Pikes Peak (WOC/FR-004) – drive up
- Mt Evans (WOC/FR-003)- drive up then ¼ -mile, 130 feet vertical hike
- Trail Ridge (WOC/FR-123) – 0.8 miles, 300 vertical feet
- Genesee Mountain (WOC/FR-194) – drive up then 200 ft hike
- Chief Mountain (WOC/FR-030) – 1 mile hike, 700 feet vertical
- Prospect Mountain (WOC/FR-069) – take the tram, then 300 feet vertical
- Monarch Ridge South (WOC/SP-058) – take the tram



Summary, Q&A

Great combination:

Hiking, Ham Radio and Colorado mountains

Resources:

- Colorado 14er Event ham14er.org August 6-7
- Summits On The Air w0c-sota.org
- SOTAwatch sotawatch.org
- KØNR Website k0nr.com



Be safe and have fun!!!

This presentation is
available for download at
k0nr.com

